

2011 Barcode Scanner Product Brochure



Famotech Inc.
Empower Your Business

Manufacturer
Famotech Inc.

2F, No. 165, Sec. 2, Ta-Tung Rd.,
Hsi-Chih 221, Taipei County, Taiwan
Tel : 886-2-8692-6300
Fax: 886-2-8692-6301
E-Mail: info@famotech.com.tw
URL: <http://www.famotech.com.tw>

CS-650



TS-5208

BCP-8000



Portable Data Collector

BCP-8000

Data Terminal With Cradle

BCP-8000 is a battery-operated portable data collector with look-up function. Equipped with a high quality laser engine, the ergonomic-built data terminal offers its users with efficiency and comfort, and is ideal for long-time use. Its 1700mAh Lithium-ion battery guarantees at least 24 hours of operation time. In addition, BCP-8000 provides a user friendly job generator utility. You don't need to create



Ergonomic design, integrated laser scanner, large internal memory and rechargeable Lithium-ion battery that allows long operation time.



Features

- Blue LED backlight
- Additional battery backup for SRAM
- Ideal for inventory, stocktaking
- Interface : RS-232 & USB
- Powerful application generator installed, easy to operate and fully customizable

BCP-7000 Portable Data Terminal

The Portable BCP-7000 is a portable data collector that allows the operator to collect data without a PC system. It is the ideal device for inventory and stocktaking. BCP-7000 is equipped with the powerful application generator software, built-in laser scanner and large internal memory.

Features

- The job generator is easy to use and easy to change for any application.
- High quality laser engine to ensure accurate barcode reading.
- Available when necessary for data exchange via RS-232 or USB option.
- A strong LED with backlight function for easy operation in dark.
- Powerful application generator software installed, easy to operate and fully customizable.



Barcode data collector with a built-in 1700mAh battery, rechargeable and can collect data entry of barcode data, data key-in, printing and storage.

Portable Data Collector

Fixed 2D Scanner

FTD-100

Fixed Mount 2D Barcode Scanner

FTD-100 is a specially designed handfree data matrix barcode scanner that makes your scanning work more efficient. Its small size and compact design makes it easy to be integrated into any devices. It features a mega-pixel CMOS sensor with integrated illumination technology which allows it to read even wrinkled, damaged or poorly printed barcodes.



Features

- Compact Size
- Powerful Image Capturing And Barcode Decoding Ability
- Integrated illumination technology
- Can Read Wrinkled, Damaged Or Poorly Printed Barcodes
- Dimensions (mm) : 49 x 73 x 25

It is an ideal device for application such as self-serve and payment kiosks, identity verification, access control, lottery terminals and more.

lightweight, ergonomic design for repetitive use, withstands 1.5 meter drops onto concrete, support multiple languages and symbologies.



Features

- Ergonomic Design
- Interface Support: USB, RS-232, KB
- Button Life Span : 50 million times
- Ideal For Applications That Require Long Reading Distances
- Depth Of Field : 2-23 cm

CS-650

Ergonomic 1D Scanner

The newly released, powerful long range barcode scanner is capable of identifying vague or small barcodes. Its outstanding decoding performance and new advanced optical apparatus makes CS-650 an ideal solution for retail, office automation and light industrial applications that require higher reading distances and a bright, well-defined scan line.



Long Range 1D Scanner



2D Data Matrix Scanner

TD-5208

Handheld 2D Imager

The newly developed TD-5208M is a high performing 2D handheld data matrix scanner. Ideal for applications such as retail, health-care, inventory, logistics, etc.. Designed with the CMOS technology, this scanner offers high-speed scanning and long scan range, and is capable of reading barcodes, images, and capture signatures in an instance under most ambient light conditions. In addition, TD-5208M allows users to read wrinkled, damaged, or poorly printed barcodes and OCR fonts.



Features

- Reads 1D & 2D barcodes
- Suitable for all kinds of industrial manufacturing application
- Easy to use & fully programmable
- Output interface: RS-232, USB
- Optical resolution: 1280 x 960
- CMOS image sensor

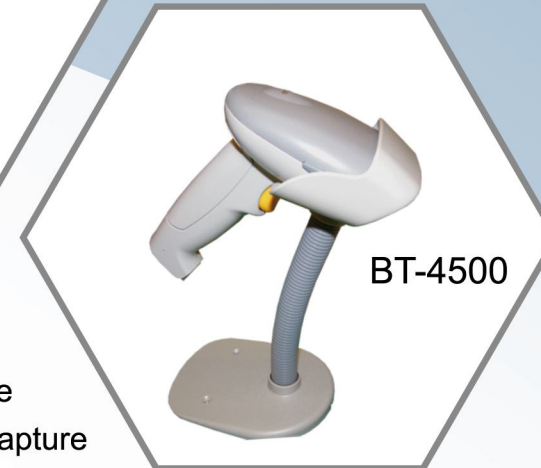
Decodes all standard 1D, 2D, RSS, PDF417, microPDF, EAN/UCC Composite, Matrix and Postal Codes.



BT Series Bluetooth Scanners



BT-3800



BT-4500

Features

- Bluetooth class 1 technology
- Range up to 70m in open space
- Support batch, on-line, and recapture operational modes
- Decoder supports most of the international barcodes standards

BCP Series Portable Scanner



BCP-5000

Features

- Entry-level data collector
- 128 x 64 LCD graphic display
- 224 Kb for data retention
- Easy data navigation and editing
- Laser or CCD engines selectable
- Recharge and communication via USB port

Wireless Barcode Scanners

Hand-Held Barcode scanner



TS-5208

Long Range CCD Barcode Scanner

Light Source:

660 nm visible red LED
Scan Rate: 100 scans / sec.
Depth Of Field: 5-39 cm
Width Of Field: 12 cm
 3468 pixels CCD



CCD-1600

Stylish CCD Barcode Scanner

Light Source:

690 nm red LED array
Scan Rate: 100 scans / sec.
Depth Of Field: 0-12 cm
Width Of Field: 10 cm



CCD-800

Cost-Effective CCD Barcode Scanner

Light Source:

660 nm red LED array
Scan Rate: 60 scans / sec.
Depth Of Field: 0-2.5 cm
Width Of Field: 8.2 cm



TS-4500

Long Range CCD Barcode Scanner

Light Source:

660 nm visible red LED
Scan Rate: 100 scans / sec.
Depth Of Field: 2-32 cm
Width Of Field: 14 cm
 3648 pixels CCD



CCD-1500

Contact CCD Barcode Scanner

Light Source:

660 nm red LED array
Scan Rate: 100 scans / sec.
Depth Of Field: 0-2.5 cm
Width Of Field: 6.8 cm

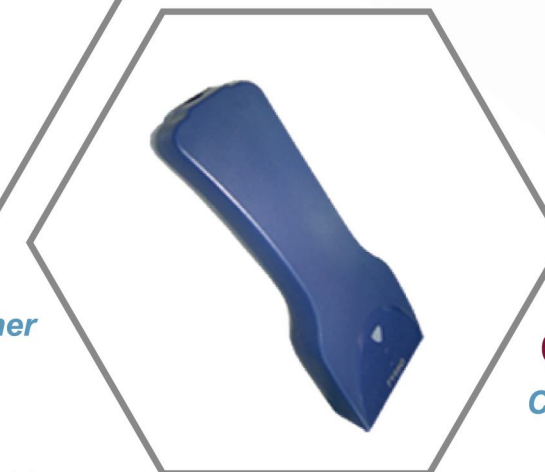


LAG-960

Reliable Laser Scanner

Light Source:

670 nm laser diode
Scan Rate: 100 scans / sec.
Depth Of Field:
 4 to 38(NR) or 45(MR) cm
Width Of Field: 25 cm



OSL-4110/4120

Compact Laser Scanner

Light Source:

670 nm laser diode
Scan Rate: 100 scans / sec.
Depth Of Field:
 2-27 / 5-40 cm
Width Of Field: 29 / 36 cm

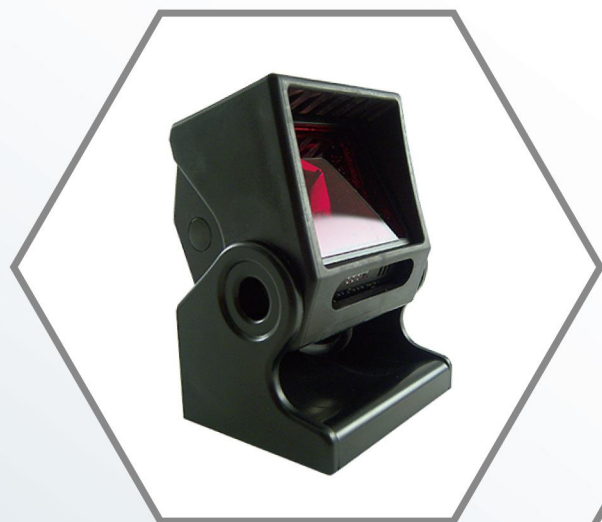
Hand-Held Barcode Scanners

The use of barcode scanners is one of the most important developments in modern business. Barcode scanners are especially important for product inventory control, supply and stocking. They provide the operators the ability to store and obtain information about a commodity or a product within seconds.

CCD, Laser, Portable, Bluetooth

Hands-Free Barcode Scanners

Omni Directional Scanners



Omni-352
Powerful Omni Directional Scanner

- Solid structure
- Sensitive automatic sensor
- Outstanding performance
- 650nm visible laser diode
- Depth of Field: 25~280mm
- Scan Rate: 1650 lines/sec.
- Interface: RS-232, PS2, USB



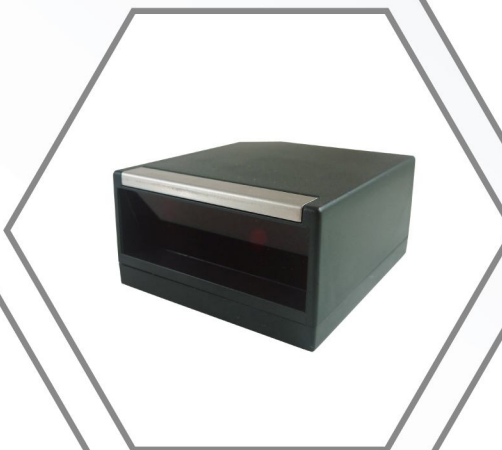
Omni-652
Compact Omni Scanner

- Compact size
- User-friendly, plug and play
- Cost effective
- 650nm visible laser diode
- Depth of Field: 0~219 mm
- Scan Rate: 1200 lines/sec.
- Interface: RS-232, PS2, USB



FCCD-500
Depth of Field: 5-40 cm
Reading Width: Up to 12 cm
Dimension (mm): 80 x 65 x 30

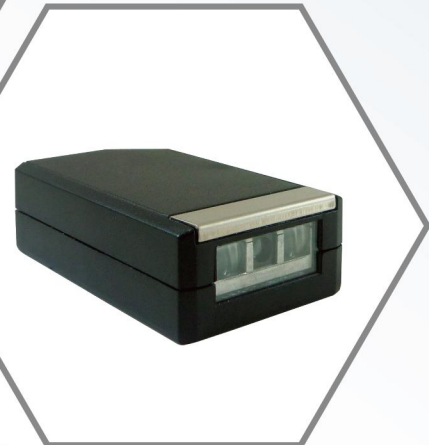
FCCD-620
Depth of Field: 3-10 cm
Reading Width: Up to 10 cm
Dimension (mm): 60 x 52 x 34



FLAG-700
Depth of Field: 2.5-25 cm
Reading Width: Up to 16 cm
Dimension (mm): 62 x 29 x 55



FLAG-900
Depth of Field: 5-18 cm
Reading Width: Up to 20 cm
Dimension (mm): 52 x 48 x 36



FCCD-650
Depth of Field: 6-22 cm
Reading Width: Up to 16 cm
Dimension (mm): 55 x 17 x 34

Fixed Barcode Scanners

Omni Directional Scanner, Fixed Scanner